

Fractal eXtreme Notes:

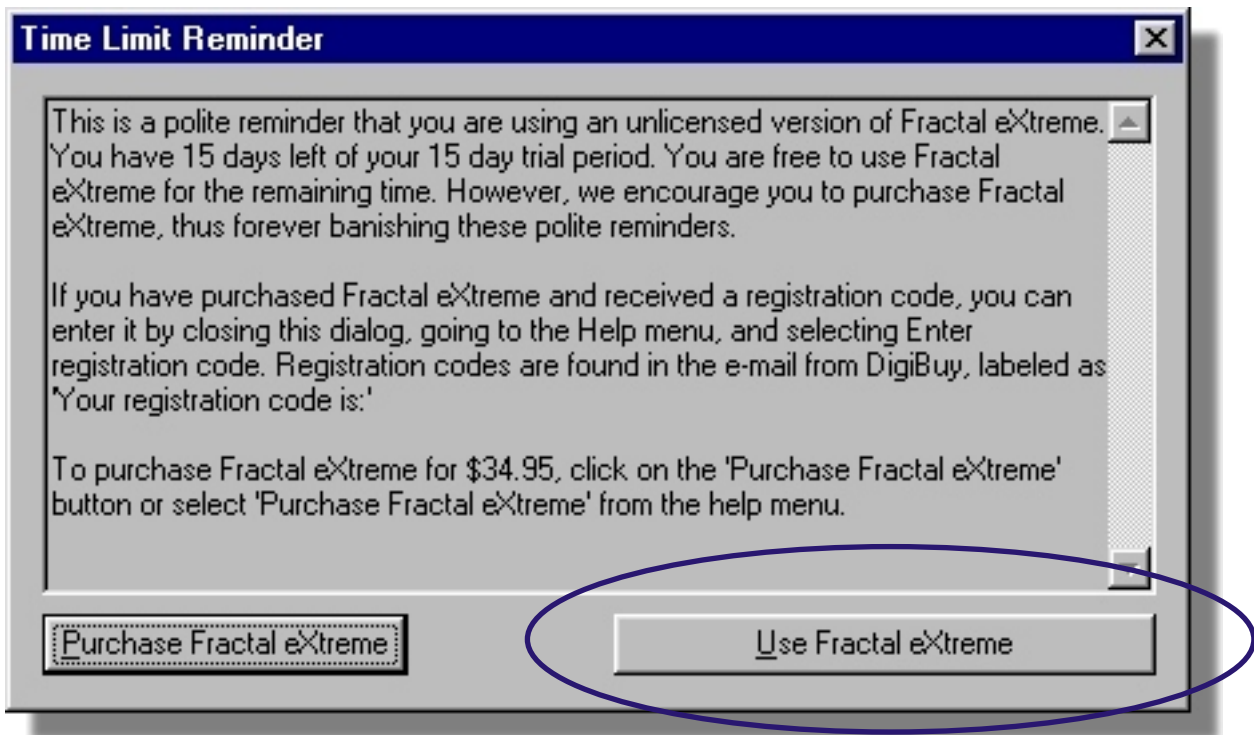
Contents:

Starting Fractal eXtreme	1
Select Fractal Type	2
Select Fractal Size	2
Changing Preferences	3
The Colour Palette	3
Rendering a Zoom Movie	4

Starting Fractal eXtreme

1 Select Start | Programs | Cygnus Software | Fractal eXtreme

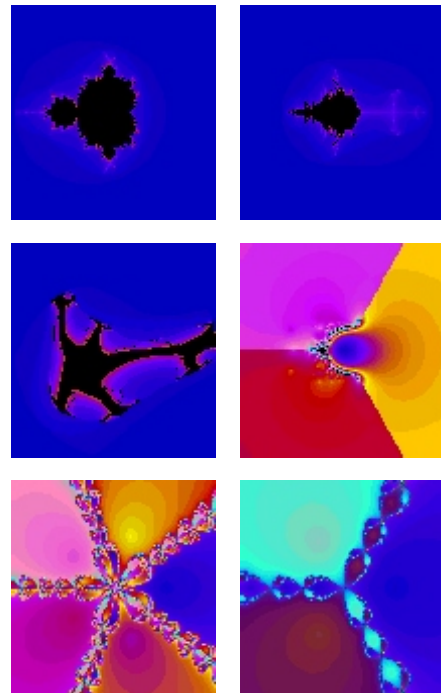
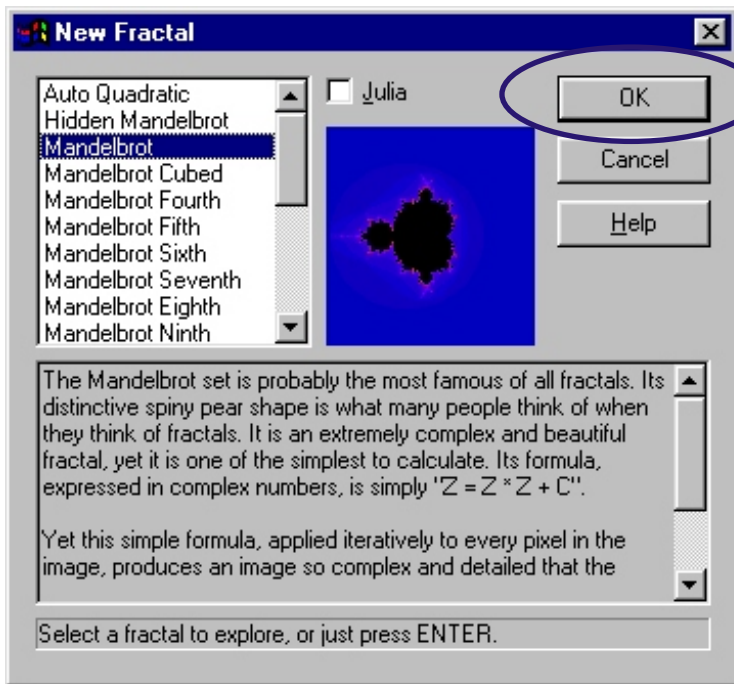
2 Click Use Fractal eXtreme



3

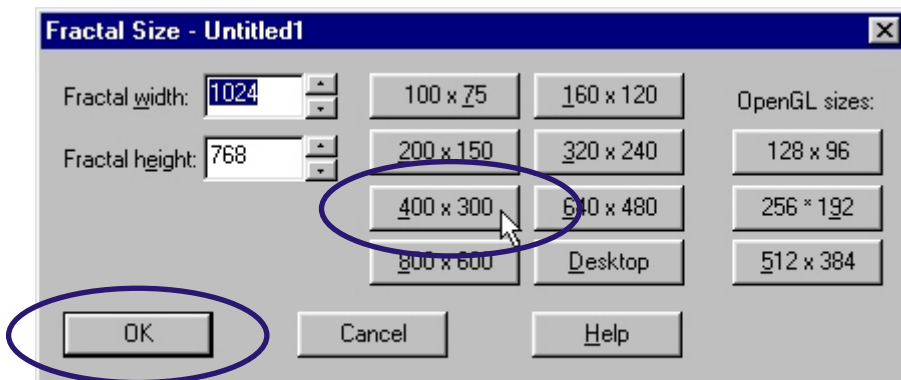
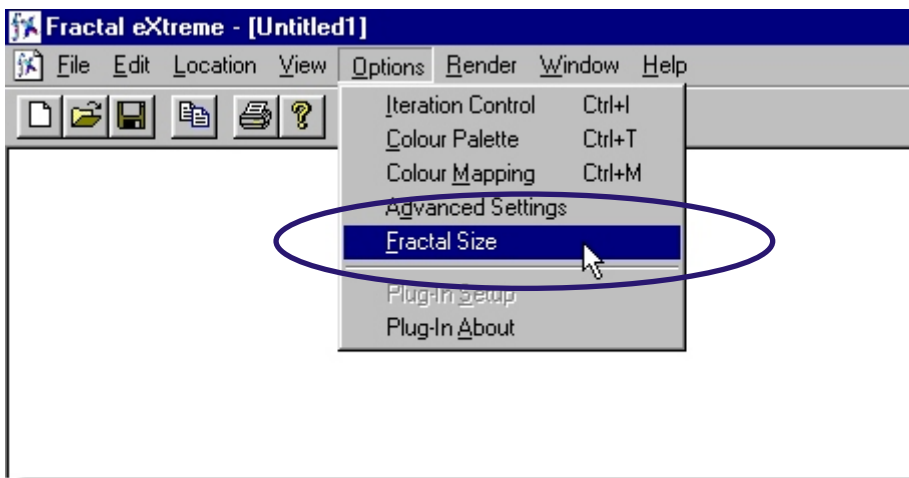
Select Fractal Type

Fractal eXtreme comes with 19 different fractal types to choose from.



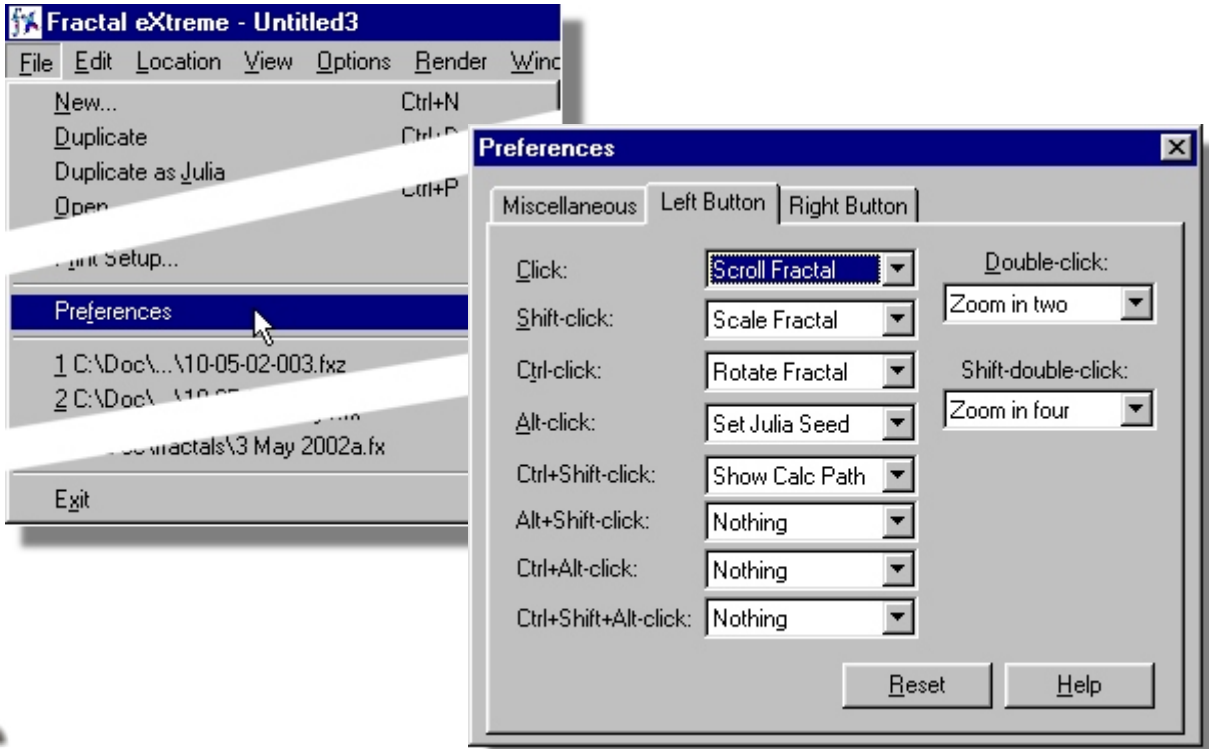
4

Select Options | Fractal Size



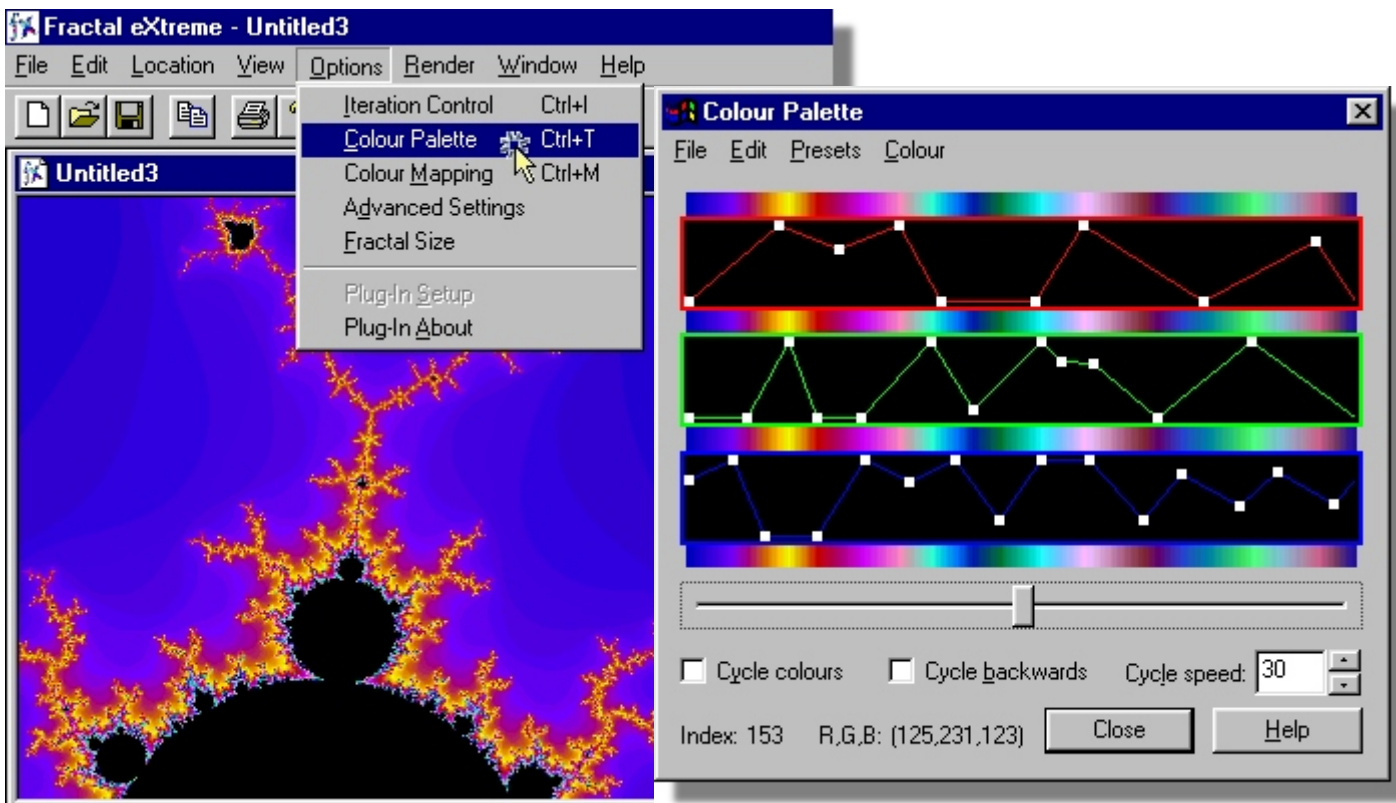
5

Navigate around the fractal using the mouse.
You may select different Preferences for Click Shift-click etc. using
File | Preferences | Left Button



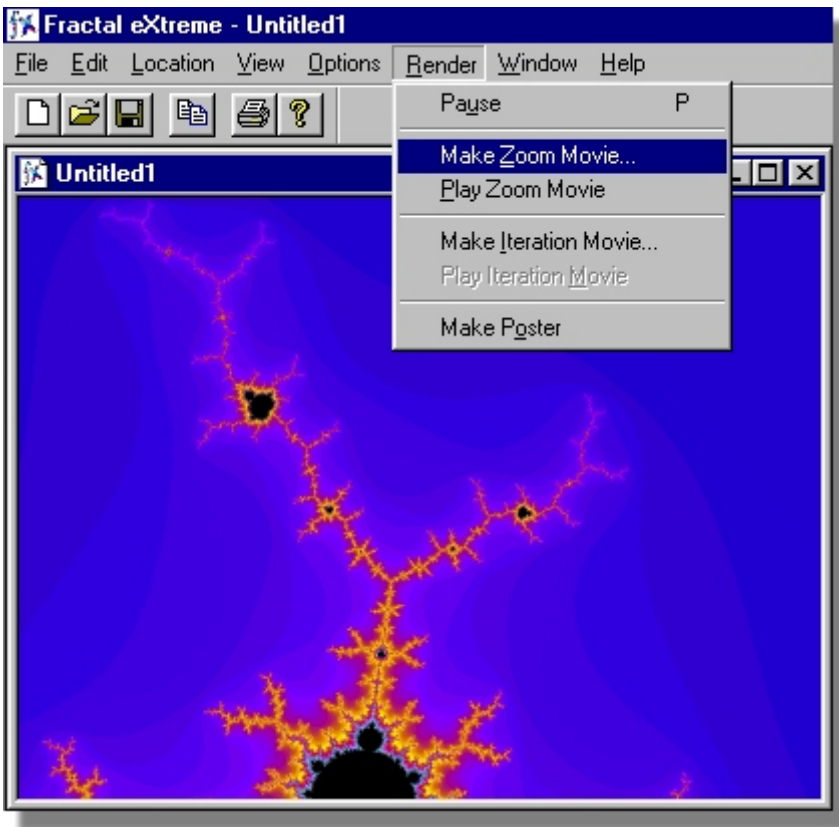
6

Play with the Colour Palette select Options | Colour Palette



7

Select Render | Make Zoom Movie...



8

Enter a file name for the Zoom Movie and click Save



Notes created by
Rupert Russell May 16, 2002
Updated April 24, 2007
Applications used: Fractal eXtreme,
Paint Shop Pro 7 & CoreIDRAW 10
Ver. 1.1